

State of Wyoming Corner Record

(in compliance with the CORNER PERPETUATION AND FILING ACT, Wyoming Statutes, 1997, Section 33-29-140, et. seq. and the Rules and Regulations of the Board of Registration for Professional Engineers and Professional Land Surveyors)

Reverse side of this form may be used if more space is needed.

Record of original survey and citation of source of historical information (if corner is lost or obliterated). Description of corner monumentation evidence found and/or monument and accessories established to perpetuate the location of this corner. Sketch of relative location of monument, accessories, and reference points with course and distance to adjacent corner(s) (if determined in this survey). Method and rationale for reestablishment of lost or obliterated corner.

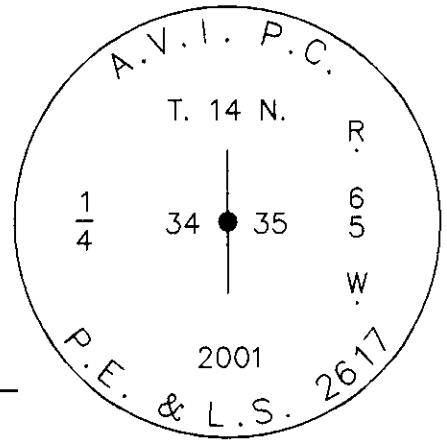
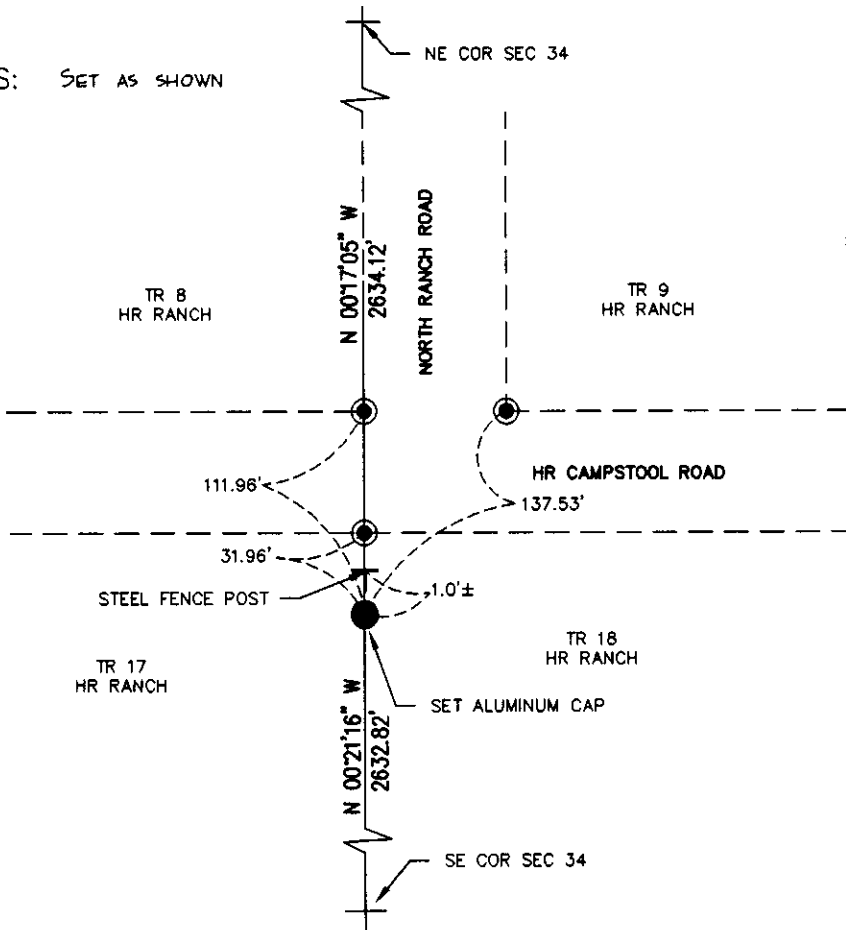
FOUND: WELL SET SANDSTONE WITH " 1/4" CHISELED ON THE EAST FACE.
STONE MEASURED 19"x 11"x 6"

G.L.O. RECORD: SANDSTONE 20"x 10"x 4"

RECORDED 10/23/2001 AT 11:45 AM REC# 306363 BK# 1615 PG# 795
DEBRA K. LATHROP, CLERK OF LARAMIE COUNTY, WY PAGE 1 OF 1

SET: 3 1/4" ALUMINUM CAP ON #5 X 24" REBAR BUIRED ORIGINAL STONE ALONG SIDE AS A MEMORIAL. CAP STAMPED AS SHOWN.

REFERENCES: SET AS SHOWN



SET MONUMENT DETAIL

Date of Field Work: 7-01 Office Reference: 2-2225.00

CROSS INDEX DIAGRAM

A	2	3	4	5	6	7	8	9	10	11	12	13	14	15	16	17	18	19	20	21	22	23	24	25	
B																									
C	6	5	4	3	2																				
D																									
E																									
F																									
G	7	8	9	10	11	12																			
H																									
J																									
K																									
L	18	17	16	15	14	13																			
M																									
N																									
O																									
P	19	20	21	22	23	24																			
Q																									
R																									
S																									
T	30	29	28	27	26	25																			
U																									
V																									
W																									
X	31	32	33	34	35	36																			
Y																									
Z	1	2	3	4	5	6	7	8	9	10	11	12	13	14	15	16	17	18	19	20	21	22	23	24	25

Firm/Agency, Address
James D. Voeller, P.E & P.L.S.
A.V.I., p.c.
2035 Westland Road
Cheyenne, WY 82001
Telephone Number: (307) 637-3400

This corner record was prepared by me or under my direction and supervision.
SEAL & SIGNATURE

